

TEKLYNX LABEL ARCHIVE

LABEL STORAGE SOFTWARE

LABEL ARCHIVE follows your label from initial approval to final distribution. Securing, tracking and controlling your label printing process has never been easier!

www.teklynx.com/labelarchive

TEKLYNX
Barcode Better 

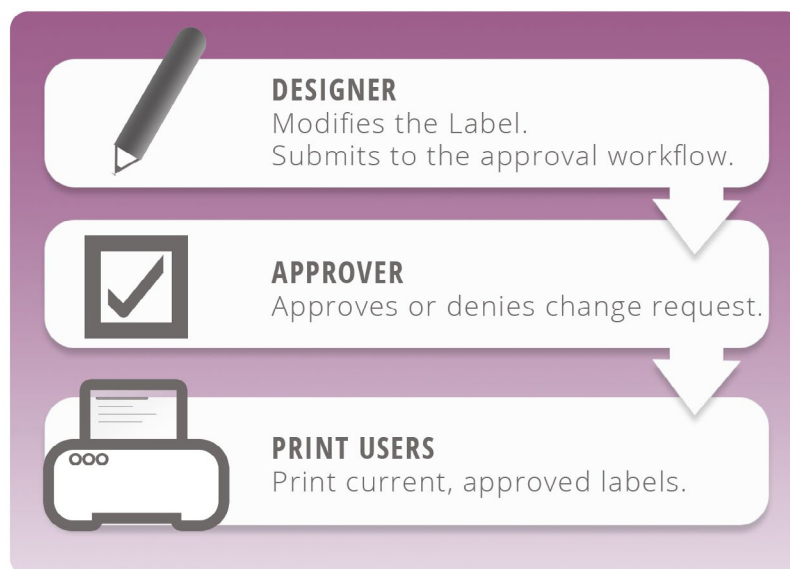
LABEL ARCHIVE is the latest addition in our Product Identification and Traceability solutions.



LABEL ARCHIVE is software that provides you with a traceability layer for the label design and printing process, including archiving, customizable approval rules, print history and security for label design and production environments.

Designed to work with CODESOFT label design and printing software, LABEL ARCHIVE addresses the label control standards required by many industries such as the chemical, pharmaceutical and manufacturing sectors.

LABEL ARCHIVE – the Complete Solution



LABEL ARCHIVE extends TEKLYNX label design and printing solutions by implementing a comprehensive, networked database that provides an enterprise-level traceability and security layer for the entire label design and print process.

Who is LABEL ARCHIVE for?

LABEL ARCHIVE was designed to meet the needs of production environments in medium to large enterprises whose label designs are subject to compliance standards, modifications, and archiving, and for whom label printing must be tracked, logged, monitored and approved.

With LABEL ARCHIVE, administrators in the Pharmaceutical, Automotive, Chemical, Manufacturing, Healthcare or Electronics industry can rest assured that their label control needs, such as CFR21 part 11 (Pharmaceutical) or GMP (Manufacturing) compliance standards, and other mandates requiring electronic records and electronic signatures, are met through LABEL ARCHIVE's built-in security, full traceability and customizable version control features.



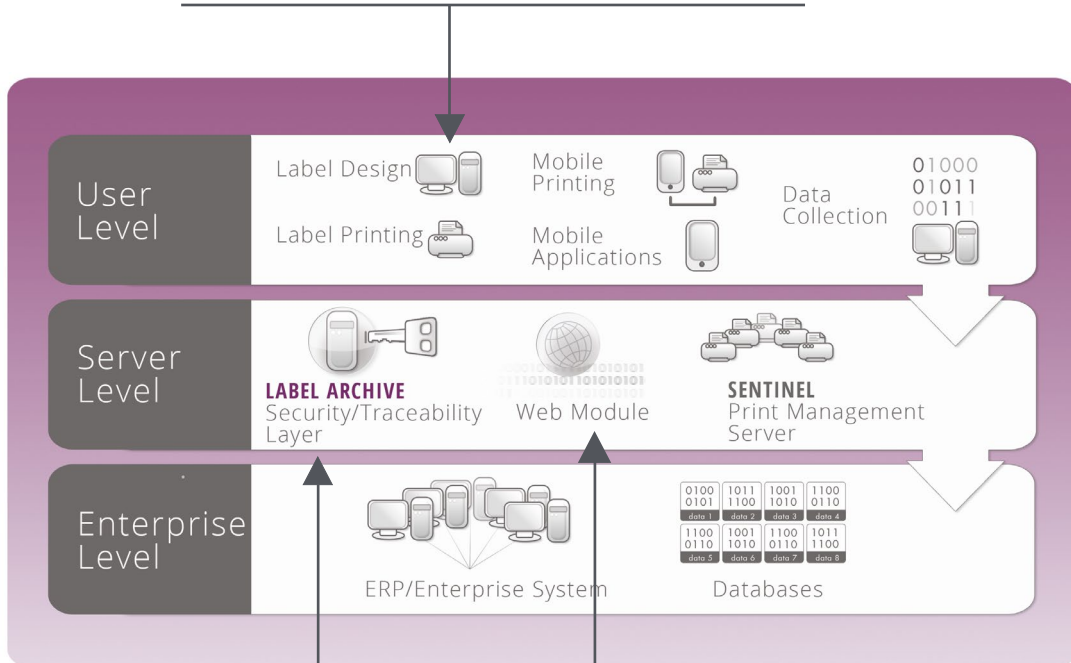
Where, and how, does LABEL ARCHIVE fit into my network?

LABEL ARCHIVE lets you secure your labels at the server level. It fits perfectly in any production environment using CODESOFT. It can work alongside SENTINEL to give you an added layer of traceability to your label printing and print management system.

LABEL ARCHIVE includes Server, Client and Web modules for a complete and secure label printing system:

- **LABEL ARCHIVE Server** – The Server module typically runs on a server machine as a centralized database, driven through a Windows® service. It allows administrator-level users to configure user management and messaging systems, as well as set up all label approval, archiving and security preferences.
- **LABEL ARCHIVE Client** – The Client module is an add-on to the Label Designer application (CODESOFT). It connects to the Server module to give authorized users the ability to perform document management activities (Check In, Check Out, Print History, Version Control, Reprint, etc.) from within the Label Designer application.
- **LABEL ARCHIVE Web** – The Web module allows remote users (or customers) to connect to the Server via a Web browser and perform basic functions including requesting a new label design, approving existing label designs, and viewing full label print history records.

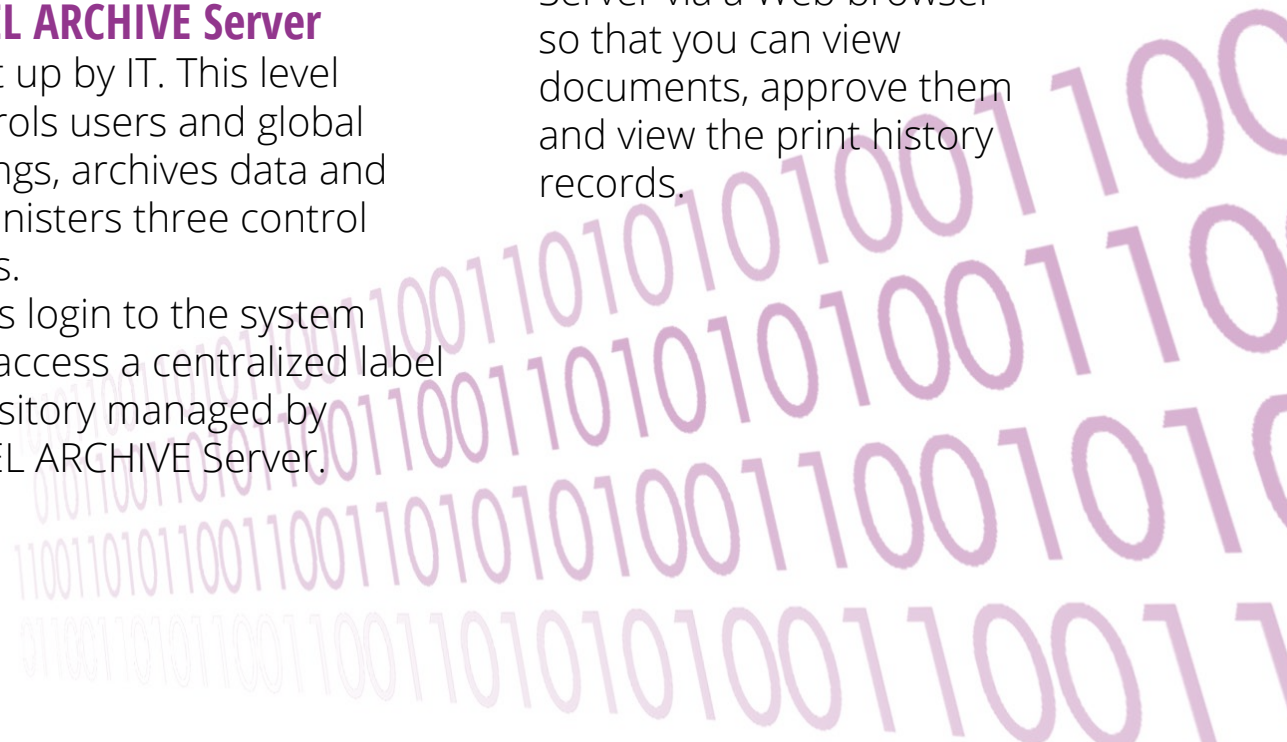
LABEL ARCHIVE Client can be installed at every design and printing station



LABEL ARCHIVE Server is set up by IT. This level controls users and global settings, archives data and administers three control levels.

Users login to the system and access a centralized label repository managed by LABEL ARCHIVE Server.

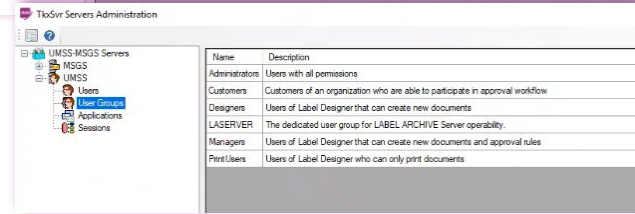
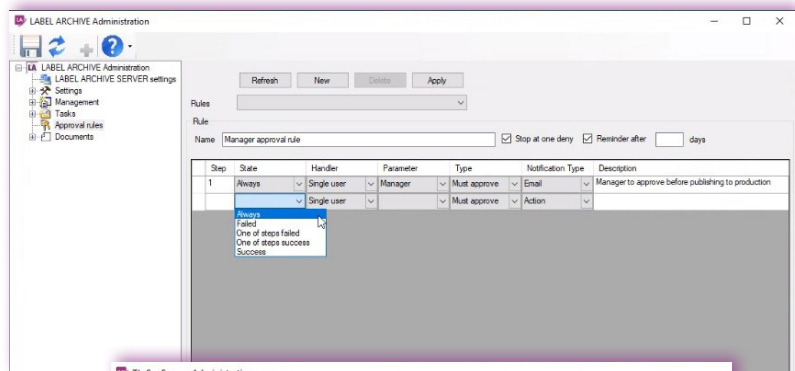
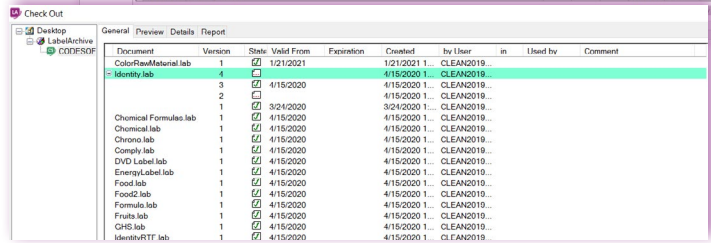
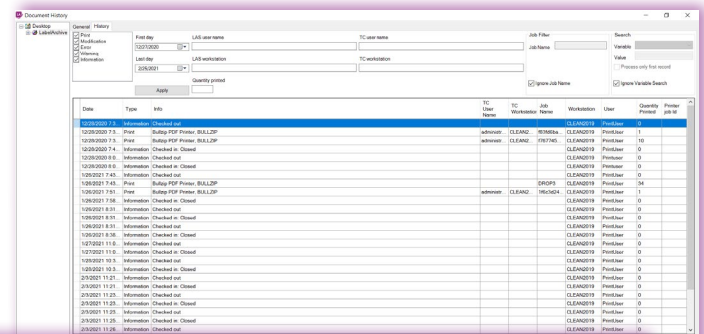
LABEL ARCHIVE Web allows you to connect to the Server via a Web browser so that you can view documents, approve them and view the print history records.



Why should I use LABEL ARCHIVE?

LABEL ARCHIVE

- Supports virtually all compliance standards including RFID label standards, WEEE/RoHS, ISO CEI 16022, HIPAA, 21 CFR, AIAG, DoD, Odette and EAN 128
- Offers a centralized architecture
- Supports Enterprise databases - SQL, Oracle
- Enables customizable multi-stage approval rules
- Allows for Internet-based approval
- Offers automatic version control
- Provides full History tracking – variable data plus Who, What, Where, and Why
- Allows Watermarks (for reprints and test labels)
- Includes built-in security (User privileges can be limited on several levels and criteria)



In a Nutshell

LABEL ARCHIVE lets you secure your label design process in three easy steps:

1. DESIGN

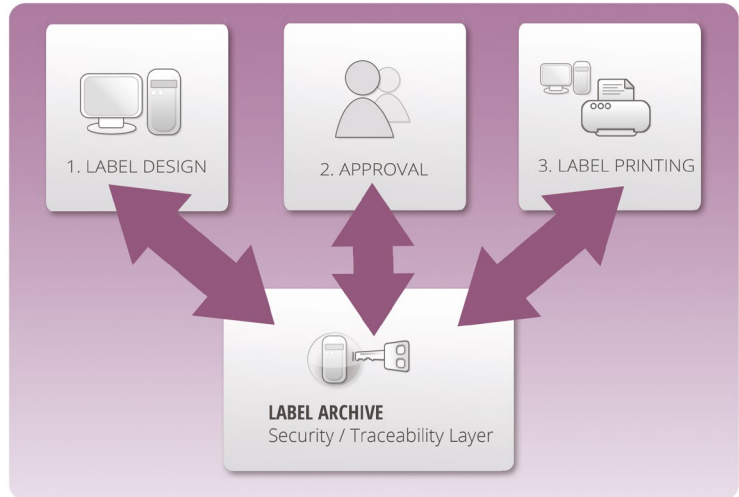
Limit access to design changes

Only "Designer" level users can check out, modify and submit proposed template changes

2. APPROVE

Mandate the use of business rules

Proposed template changes must be approved based on your business rules



3. PRINT

Manage who prints

Only "Print User" level users can check out label templates for printing.

You can print from:

- CODESOFT
- ERP/WMS or any host system print requests processed through SENTINEL

101011001101011001100
01011001101011001100
1100110101100110011010
0110011010110011001101

About TEKLYNX

TEKLYNX International helps supply chains work better. Today, more than 750,000 companies in over 170 countries trust TEKLYNX integrated barcode and RFID label design products and the people behind its solutions to make barcode labeling operations efficient, accurate, secure and industry compliant. With over 30 years of experience, TEKLYNX is the global leader because of its reliable software and superior customer support. To learn more about how the TEKLYNX community helps companies across industries worldwide, visit teklynx.com or call TEKLYNX in your region. Barcode Better™ with TEKLYNX.



France +33 (0) 562 601 080 Germany + 49 (0) 2103 2526 0 Singapore +65 6908 0960 USA +1 (414) 837 4800

© Copyright 2021 TEKLYNX Corporation SAS. All rights reserved. TEKLYNX, CODESOFT, SENTINEL and LABEL ARCHIVE are trademarks or registered trademarks of TEKLYNX Corporation SAS or its affiliated companies.

www.teklynx.com

